

Report to: **Partnership Board –Transport for the South East**

Date of meeting: **3 July 2023**

By: **Lead Officer, Transport for the South East**

Title of report: **Strategic Investment Plan – Summary document**

Purpose of report: **To agree the summary document for the Strategic Investment Plan**

RECOMMENDATIONS:

The members of the Partnership Board are recommended to:

- (1) Agree the summary document for the Strategic Investment Plan;**
- (2) Agree that the summary document will be published on the TfSE website;**
and
- (3) Note the response from the Department for Transport to the Strategic Investment Plan.**

1. Overview

1.1 The purpose of this report is to present the summary document of the Strategic Investment Plan (SIP) and update on the response to the SIP from the government.

1.2 At the Partnership Board meeting on 13 March 2023, the final version of the SIP and Integrated Sustainability Appraisal (ISA) were agreed for submission to government. A summary document of the SIP has subsequently been produced for agreement by the Partnership Board.

1.3 The SIP was submitted to the Department for Transport on 13 March 2023. A response has been received from Richard Holden, Parliamentary Under Secretary of State. This report provides an update for Partnership Board members.

2. Summary document of the Strategic Investment Plan

2.1 At the Partnership Board meeting on 13 March 2023, members agreed the final copy of the SIP and ISA for submission to government and for publication on the TfSE website.

2.2 A draft summary document of the SIP has now been produced and will be made available on the TfSE website, subject to approval by the Partnership Board. The draft summary document is attached as Appendix 1.

2.3 The summary is intended to be a fully designed summary of the Strategic Investment Plan. The summary presents the key sections of the SIP, including the

strategic vision for the SIP, the case for investment in the South East, followed by a high level summary of the packages of interventions recommended to achieve the vision.

2.4 The summary document will be presented on the TfSE website as fully accessible content, making it as easy as possible for readers to navigate their way through the document. It will sit alongside the full SIP and will offer an opportunity for stakeholders and residents to be directed to more detailed information, including the technical documentation and thematic studies.

3. Department for Transport response to the Strategic Investment Plan

3.1 Following submission of the SIP to government in March 2023, Parliamentary Under Secretary of State, Richard Holden, has written to the Chair of the Partnership Board welcoming the publication of the document. He noted the 'vast amount of collaboration that has taken place with local partners to produce this plan'. The letter also welcomes TfSE's ongoing focus on key government priorities.

3.2 The letter confirms that Department for Transport officials have been instructed to give due consideration to the plan when advising Ministers on future policy and investment decisions. The support of DfT ministers and officials is welcomed.

3.3 A copy of the letter is attached as Appendix 2.

4 Conclusions and Recommendations

4.1 Following the Partnership Board meeting on 13 March 2023 the SIP and ISA have been published on the website and submitted to Government.

4.2 The Partnership Board are recommended to approve the SIP summary document for publication and note the response from the Department for Transport to the SIP.

RUPERT CLUBB

Lead Officer

Transport for the South East

Contact Officer: Rachel Ford

Tel. No. 07763 579818

Email: rachel.ford@eastsussex.gov.uk

Introduction

Transport for the South East (TfSE) is the Sub-national Transport Body for the south east of England.

TfSE works across boundaries, thinks long term and advocates for bold action in the interest of its communities.

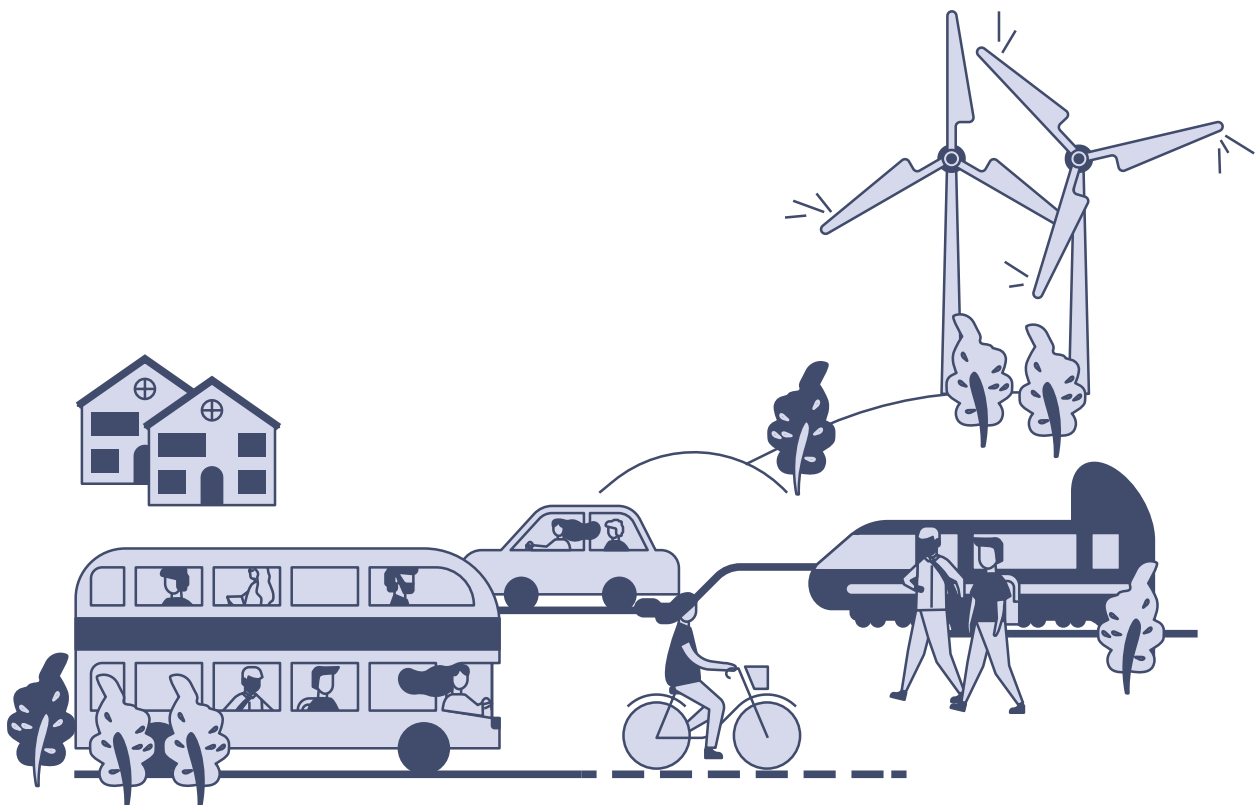


We were established in 2017 to determine what transport infrastructure is needed to boost the region's economy.

Our role is to add strategic value to local and national decision making and project delivery by making sure funding and strategy decisions about transport in the south east are informed by local knowledge and priorities.

As a partnership, we also ensure there is close alignment – a 'golden thread' – between local and central government in both the development of relevant policy and the delivery of interventions.

For example, between local transport plans and national rail investment strategies.



Transport Strategy vision

By 2050, the south east of England will be a leading global region for net zero carbon, sustainable economic growth where integrated transport, digital and energy networks have delivered a step-change in connectivity and environmental quality. A high-quality, reliable, safe and accessible transport network will offer seamless door-to-door journeys enabling our businesses to compete and trade more effectively in the global marketplace and giving our residents and visitors the highest quality of life.

Taken from TfSE's Transport Strategy for the South East (2020)



The vision is underpinned by three strategic goals:



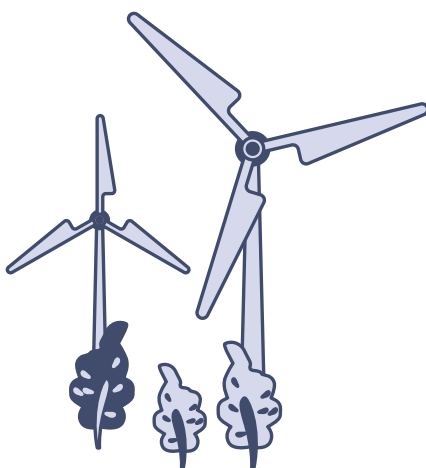
Economic

Improve productivity and attract investment to grow our economy and better compete in the global marketplace.



Social

Improve health, safety, wellbeing, quality of life and access to opportunities for everyone.



Environmental

Protect and enhance the south east's unique natural and historical environment, and reach net zero carbon by 2050 at the latest.

The Strategic Investment Plan

We are delighted to introduce our Strategic Investment Plan for the south east of England, which provides a framework for investment in strategic transport infrastructure, services and regulatory interventions in the coming three decades.





The Strategic Investment Plan provides a framework for delivering our Transport Strategy and:

- is a blueprint for investment in the south east;
- shows how we will achieve our ambitions for the south east;
- is owned and delivered in partnership;
- as set out in the legislation to establish sub-national transport bodies, provides advice to the Secretary of State for Transport;
- is a regional plan supported by evidence, to which partners can link their own local strategies and plans;
- a golden thread that connects policy at all levels;
- provides a sequenced plan of multi-modal investment packages that are place-based and outcome-focused;
- assesses carbon emissions; and
- identifies funding and financing options.

This plan presents a compelling case for action for investors, including government departments – notably the Treasury and the Department for Transport – as well as private sector investors. It is written for and on behalf of the south east’s residents, communities, businesses and political representatives.

The size of the prize

TfSE's Economic Connectivity Review identified opportunities to significantly grow the economy in the south east.

With the right investment and policies, this study found there is potential to more than double the south east's economy to **£500 billion (gross value added) a year** by 2050.

This growth will not come from transport alone, but transport will be an important part of the jigsaw and an enabler of growth in other sectors.

Realising this opportunity will require an integrated approach to investment and delivery.

It will require working across institutional, sectoral and spatial boundaries.



With a total capital cost of **£45 billion** over 27 years – about **£1.5 billion a year** – delivery of the interventions in this plan could deliver:



21,000 additional new jobs



An additional £4 billion in GVA each year by 2050

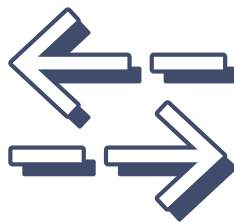


1.4 mega tonnes less CO₂ equivalent emitted (and the scope to reach net zero with national, local and private sector partners by 2050)

Delivery of the interventions would see each weekday:



500,000 more rail trips



1.5 million more trips by bus, mass transit and ferry



4 million fewer car trips

How the plan was developed

This plan represents the culmination of five years of technical work, stakeholder engagement and institutional development.

This plan is aligned with and supports wider policy and government priorities at multiple levels and across multiple transport modes.



It is underpinned by a robust, credible, evidence-based technical programme that has enabled TfSE and our partners to:

- understand the current and future challenges and opportunities in the south east;
- identify stakeholder priorities for their respective areas of interest;
- evaluate the impacts of a wide range of plausible scenarios on the south east's economy, society and environment;
- develop multi-modal, cross-boundary packages of interventions;
- assess the impact of proposed interventions on transport and socio-economic and environmental outcomes;
- prioritise the interventions that best address the south east's most pressing challenges; and
- unlock the south east's most promising opportunities.

For more detailed information and a list of all documents that make up this credible, evidence-based technical programme view the full Strategic Investment Plan at www.tfse.org.uk

Within each package is a collection of well-considered interventions that seek to address the key investment priorities for the south east.



Decarbonisation and environment

Accelerate decarbonisation of the south east, enabling the UK to achieve net zero carbon by 2050 at the latest, recognising that some areas have set earlier targets. This priority also supports the delivery of a transport network with greater use of public transport, powered by decarbonised energy sources (e.g. electricity and green hydrogen), and active travel, as well as behaviour change measures and reduction in the need to travel. All interventions will incorporate measures to deliver biodiversity net gain and enhance landscape from the outset, and will have due regard to Section 62 of the Environment Act (1995).



Adapting to a new normal

Enable the south east's economy and transport systems to adapt sustainably to changing travel patterns and new ways of working and living as we learn to live with Covid and from changing trading relationships between the UK and EU.



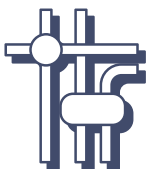
Levelling up left behind communities

Deliver a more affordable and accessible transport network for the south east that addresses deprivation, promotes social inclusion, improves public health and individual wellbeing, and reduces barriers to employment, learning, social, leisure, physical and cultural activity for all rural and urban communities.



Regeneration and growth

Attract investment to grow our economy, better compete in the global marketplace, unlock regeneration and growth opportunities and address housing shortages where this has been held back by inadequate infrastructure or poor integration between land use and transport planning – and plan to help reduce the need to travel by car and other motor vehicles.



World class urban transport systems

Deliver world class and seamlessly integrated, sustainable urban transport systems (rail, bus, tram, ferry, cycling, and walking) for the south east's largest conurbations, to enable residents of all ages and levels of ability, businesses, and visitors to travel easily, safely, and sustainably within and between built up areas.



Transforming east – west connectivity

Enhance our east – west and London orbital corridors to the same level as radial links to and from London to boost connectivity between our major economic hubs, international gateways (ports, airports, and international rail terminals) and their markets.



Resilient radial corridors

Deliver an increasingly reliable transport network that is smarter at managing transport demand, and more resilient to accidents as well as climate related incidents, to strengthen the south east’s key role supporting the capital and connecting the UK to the rest of the world.



Global gateways and freight

Enhance the capacity and contribution of the freight and logistics sector to the south east’s economy through improved connectivity to global gateways, including Freeports, and adapt to changing patterns of freight demand and trade, including making the most of innovations in sustainable first and last mile delivery.

Local and national policy context

This Strategic Investment Plan sits at the regional planning level, bridging the gap between national and local government.

This approach includes close alignment between TfSE's Transport Strategy for the South East, this plan, and local transport plans. This helps to ensure individual community needs are well understood and that interventions at every scale complement each other, avoiding waste and duplication of effort wherever possible.



Wider policy context

National



HM Government
Network Rail
National Highways



**Future of Freight:
a long term plan**



**Transport
Decarbonisation
Plan**



**Williams-Shapps
Plan for Rail**



**Road Investment
Strategy**



Bus Back Better



Gear Change



Levelling Up

Regional



Transport
for the
South East



**Transport
Strategy**



**Strategic Investment
Plan (SIP)**

Local



Local authorities



**Local Cycling & Walking
Infrastructure Plans
(LCWIP)**



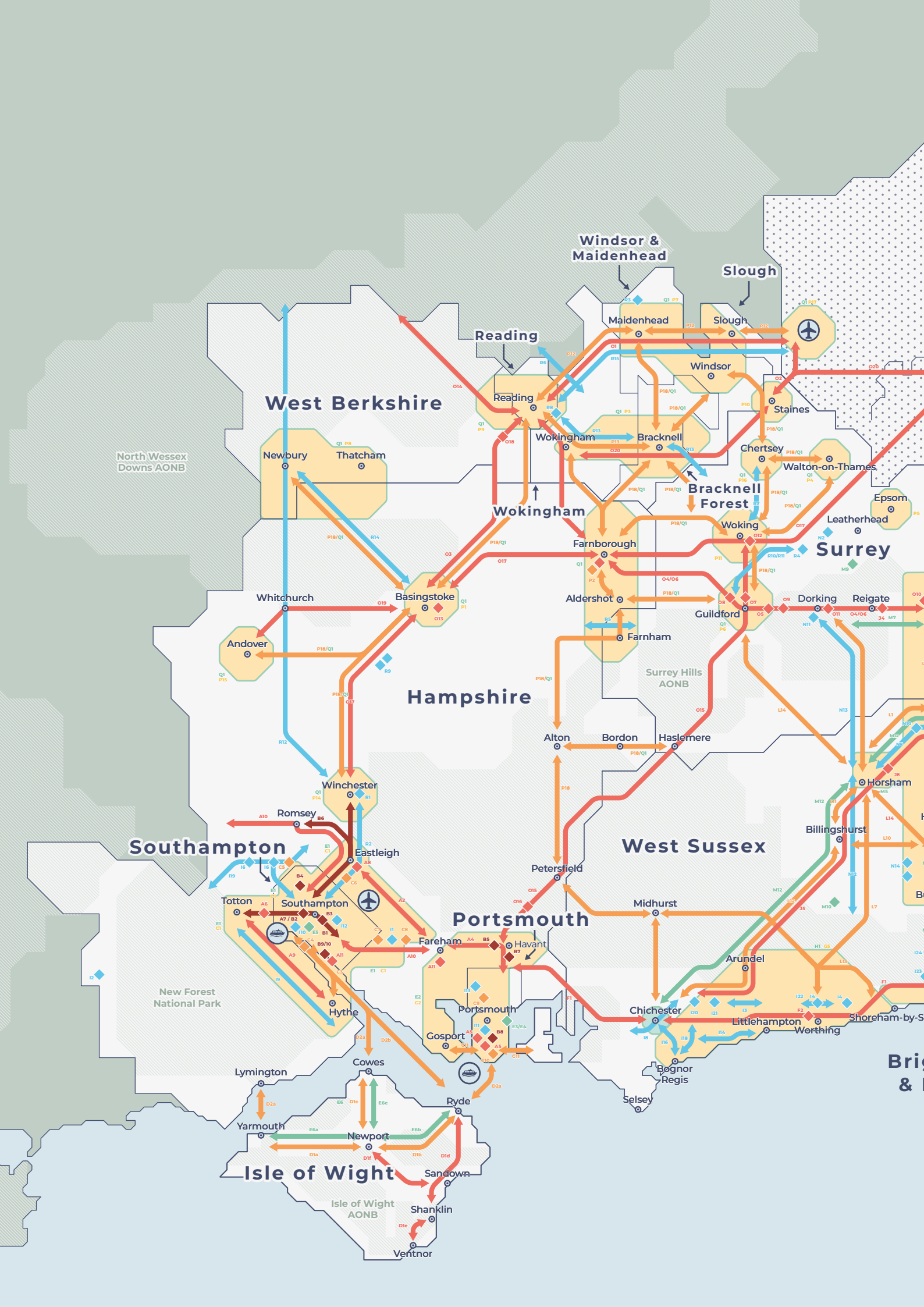
**Local Transport
Plans (LTP)**

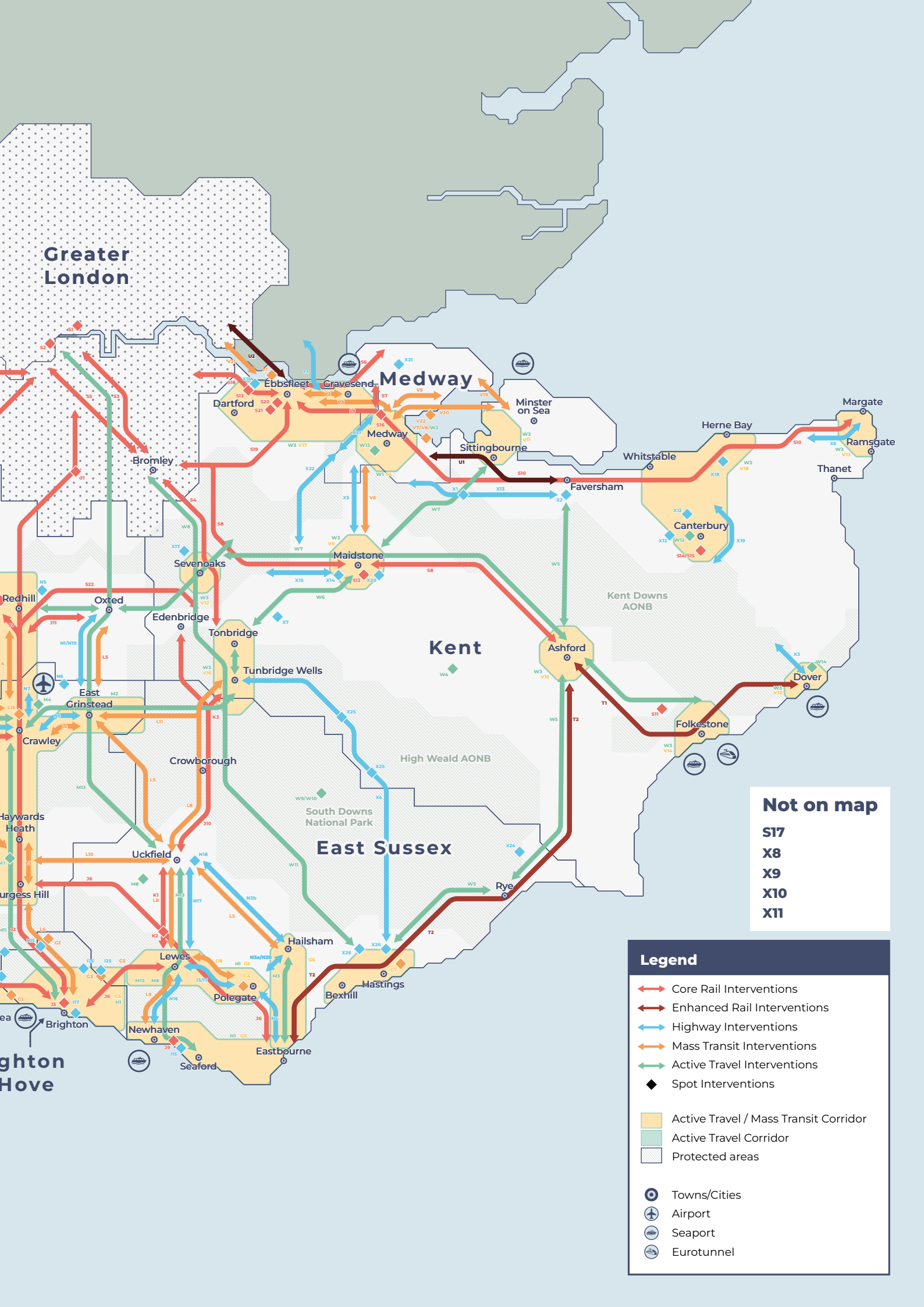


**Bus Service
Improvement
Plans (BSIP)**



Local Plans





Greater London

Medway

Kent

East Sussex

Not on map
 S17
 X8
 X9
 X10
 X11

Legend

- Core Rail Interventions
- Enhanced Rail Interventions
- Highway Interventions
- Mass Transit Interventions
- Active Travel Interventions
- Spot Interventions

- Active Travel / Mass Transit Corridor
- Active Travel Corridor
- Protected areas

- Towns/Cities
- Airport
- Seaport
- Eurotunnel

Packages of interventions

TfSE has worked with partners, stakeholders and technical advisors to develop 24 coherent packages of complementary, multi-modal interventions that aim to deliver on our vision and objectives for the south east.

This combination of strategic investments will allow TfSE to achieve its objectives and, in doing so, support wider local, regional and national policy and priorities.

The packages broadly split into two groups:

I. Global policy interventions consisting of national regulatory and policy activity and local action (four of which have been quantitatively assessed).

II. 24 place-based packages of interventions presented at a sub-regional level, with many being multi-modal or mode-agnostic.

For full details on the packages of interventions, view the full SIP at www.tfse.org.uk



1. Global policy interventions

The global policy interventions are designed to address the challenges and opportunities that affect the whole of the south east and the wider UK. These include challenges such as climate change and opportunities such as new mobility technologies.

The key global policy interventions that would help deliver the investment priorities of the south east are:

Decarbonisation

We aspire to deliver a faster trajectory towards net zero than current trends, including rapid adoption of zero emission technologies, to avoid the worst effects of human-induced climate change. This includes: working with partners at all scales of government and the private sector through the regional transport decarbonisation forum, to decarbonise energy production; and provide infrastructure for electric vehicles and green hydrogen refuelling.

Public Transport Fares

We wish to reverse the increase in real terms of the cost of public transport compared to motoring and increase ticket integration to reduce barriers.

New Mobility

We see great potential for new mobility technologies (e.g. electric bikes and scooters) and access opportunities (e.g. subscription models, car clubs and Mobility as a Service) to support decarbonisation of travel in the south east.

Road User Charging

We encourage central government to develop a national road user charging system to provide an alternative source of funding to fuel duty and to help manage demand in parallel to integrated local measures. Local authorities also have the opportunity to investigate measures such as workplace parking levies and low emission zones in their areas where appropriate.

Virtual Access

The past two decades, amplified by the global Covid pandemic, have shown how virtual working can help reduce demand for transport services, and we support this transition where appropriate.

Integration

We wish to see improvements in integration across and between all modes of transport in terms of infrastructure, services, ticketing, and accessibility, as well as transport and land use integration, supporting seamless journeys and improved first and last mile connectivity.

2. Solent and Sussex Coast

The Solent and Sussex Coast area includes the two largest conurbations in the south east – South Hampshire (Southampton, Portsmouth and surrounding built-up areas) and what TfSE terms the “Sussex Coast conurbation” (Littlehampton – Worthing – Brighton). It spans from the New Forest in the west to Hastings in the east. It also includes the Isle of Wight.

TfSE has developed nine packages of interventions for this area with a total expected capital investment of **£11.8 billion** and **£1.3 billion** in additional economic value each year by 2050.





3. London to Sussex Coast

The London to Sussex Coast area covers the key corridors between London and the Sussex Coast conurbation (from Chichester to Eastbourne). It focuses on interventions in east Surrey, West Sussex and East Sussex (excluding the Hastings area).

TfSE has developed five packages of interventions for this area with a total expected capital investment of **£3.6 billion** and **£0.6 billion** in additional economic value each year by 2050.



4. Wessex Thames

The area TfSE refers to as Wessex Thames includes the whole of Berkshire, north Hampshire and west Surrey.

TfSE has developed three packages of interventions for this area with a total expected capital investment of **£10.4 billion** and **£1.2 billion** in additional economic value each year by 2050.





5. Kent, Medway and East Sussex

This area covers the whole of Kent and Medway, and the Hastings and Rother areas of East Sussex. It broadly reflects the Network Rail “Kent” Route and the area in the south east served by the “Integrated Kent” passenger rail franchise.

TfSE has developed seven packages of interventions for this area with a total expected capital investment of **£19.4 billion** and **£0.8 billion** in additional economic value each year by 2050, along with the long-term capacity and resilience required to keep the country’s most important gateway to trade with mainland Europe operating efficiently.



Funding and financing

We know that the credibility of our Strategic Investment Plan, which is both ambitious and capital-intensive, needs to be underpinned by a pragmatic consideration of how it will be paid for.



In common with other comparable infrastructure programmes, the Strategic Investment Plan's principal financial challenge will relate to funding (i.e. how the interventions are ultimately paid for over time).

Addressing this challenge will involve making the best use of funds directed from central government and identifying new and innovative approaches (especially those that tap into the local and regional value that the interventions will generate).

For many of the proposed interventions, financing (i.e. how and from whom the cash is raised to meet the costs of construction as they arise) will also play an important role in ensuring value-for-money delivery.

The Strategic Investment Plan is made up of a number of diverse interventions and there is not going to be a 'one size fits all' funding and financing solution that applies across the programme. TfSE itself may not be the body that delivers or pays for these interventions, but as an organisation, we have an important role to play in making them a reality.

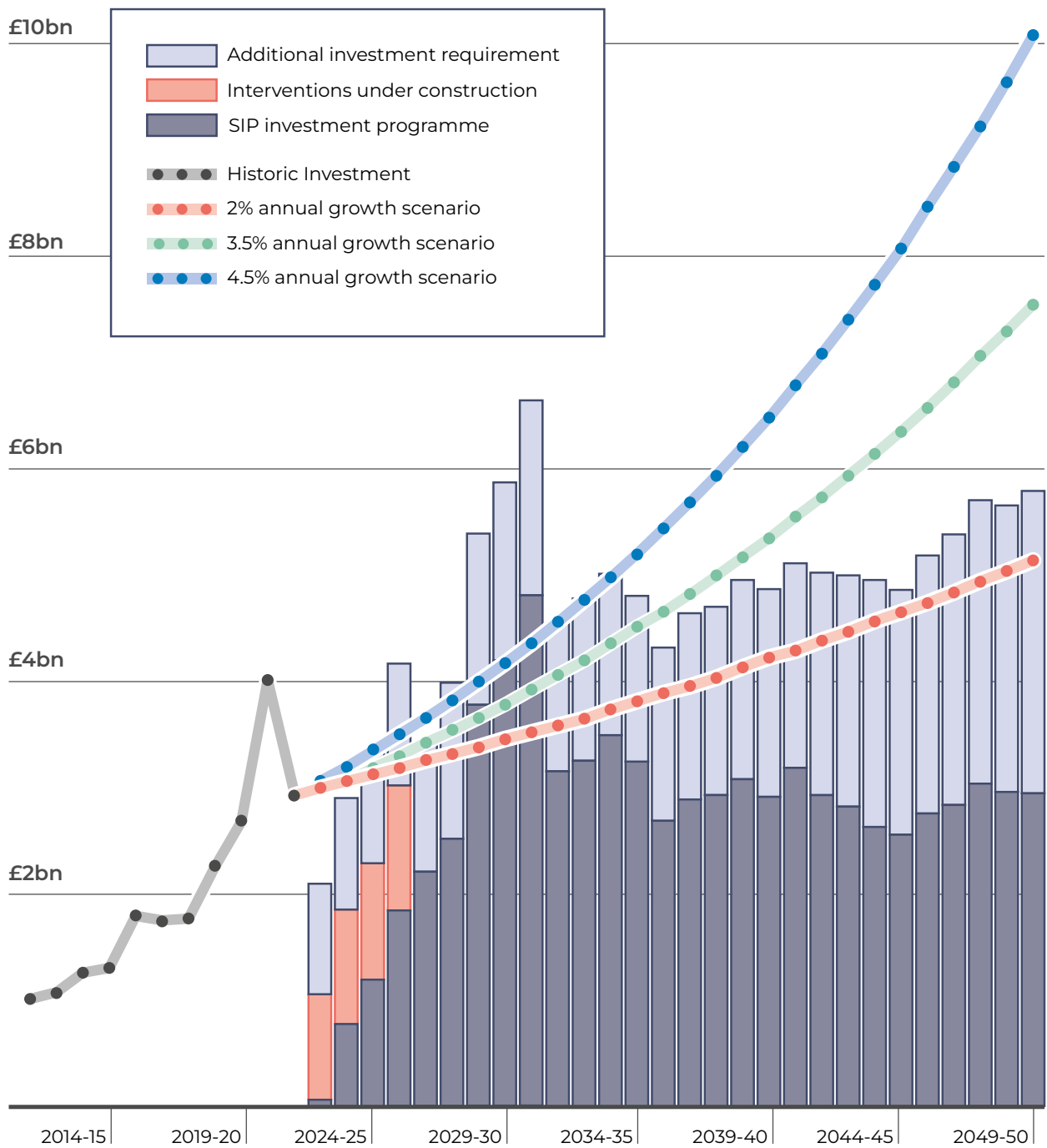
The Strategic Investment Plan's funding requirement in context

This chart compares the proposed future investment in transport in the south east (the Strategic Investment Plan and assumed additional local expenditure) with illustrative future growth scenarios based on actual levels of government expenditure since 2011/12.

This suggests that even if spend were to grow at a slower rate than the historic average, the majority of the overall core programme (as well as much of the indicative ancillary investment) could theoretically be supported within an illustrative envelope of potential future central funding.



Indicative investment requirement and historic and projected spend profiles



Delivery

Roles and responsibilities

TfSE will work closely with partners to deliver the packages of interventions. No single organisation will be solely responsible for delivering this plan – its delivery is very much a shared endeavour.

Here is a summary of the key organisations we expect to be involved:

- central government
- Network Rail and Great British Railways
- National Highways
- local transport authorities
- the private sector and third parties
- local planning authorities

Timing and phasing

In general, the vast majority of interventions included in the packages will be delivered through existing frameworks and investment cycles, in line with HM Treasury's 'Green Book' and the Department for Transport's Transport Analysis Guidance.

A small number of particularly complex and/or large-scale interventions may require bespoke procurement and delivery arrangements.

Lessons should be captured from similar UK interventions (e.g. Crossrail, HS2) to inform the approach for the delivery of these types of projects.

Timing the delivery of each intervention will also need to be carefully considered to avoid unintended negative consequences and ensure the greatest possible value for taxpayers and private investment.



Stakeholder engagement

TfSE's technical programme has been supported by an extensive programme of stakeholder engagement.

TfSE has tailored their approach to stakeholder engagement at each stage of the technical programme and will continue to evolve its approach as the Strategic Investment Plan moves into a delivery phase.

The profile of stakeholders who will need to be engaged in future stages may be different to those involved at earlier stages.

Monitoring and evaluation

TfSE and its partners will establish appropriate governance to oversee the development, delivery and benefits realisation arising from interventions included in this strategy – particularly the larger and/or more complex interventions, which may require a bespoke approach for delivery.

TfSE will develop a set of key performance indicators which will be used to monitor and evaluate the implementation of this strategy.

Next steps

TfSE is on a journey. Its role will evolve as it strengthens its capacity to support the delivery of the Strategic Investment Plan.



The next steps for TfSE are to:

- develop a delivery action plan for the Strategic Investment Plan;
- identify and support key interventions that deliver the Strategic Investment Plan and require additional support and capacity;
- secure higher levels of transport investment in the south east's strategic transport network;
- support TfSE's key stakeholders in responding to and overcoming emerging transport challenges; and
- maintain the Strategic Investment Plan as a "live" document, updating it where and when appropriate.

TfSE will do this by:

- developing regional data, modelling and analytics capability;
- evolving to deliver the Strategic Investment Plan;
- implementing supporting strategies, including the Future Mobility Strategy and the Freight, Logistics and International Gateways Strategy;
- developing policy position statements on key issues including active travel, rural mobility, and decarbonisation; and
- committing to conducting a review and update the Strategic Investment Plan every five years or sooner.

You can read the full SIP at www.tfse.org.uk

Prepared for:



County Hall, St. Anne's Crescent
Lewes, BN7 1UE

Prepared by:

steer

14-21 Rushworth Street
London, SE1 0RB

+44 20 7910 5000
steergroup.com

Steer has prepared this material for Transport for the South East. This material may only be used within the context and scope for which Steer has prepared it and may not be relied upon in part or whole by any third party or be used for any other purpose. Any person choosing to use any part of this material without the express and written permission of Steer shall be deemed to confirm their agreement to indemnify Steer for all loss or damage resulting therefrom. Steer has prepared this material using professional practices and procedures using information available to it at the time and as such any new information could alter the validity of the results and conclusions made.



Department
for Transport

From the Parliamentary
Under Secretary of State
Richard Holden MP

Great Minster House
33 Horseferry Road
London
SW1P 4DR

Tel: 0300 330 3000
E-Mail: richard.holden@dft.gov.uk

Web site: www.gov.uk/dft

Our Ref: MC/424939

Councillor Keith Glazier
Chair, Transport for the South East
County Hall, St. Anne's Crescent
Lewes
BN7 1UE

26th March 2023

Dear *Mr Glazier,*

Thank you for your letters of 13 March submitting your Strategic Investment Plan for the South East. I appreciate just how much work has gone into this and the vast amount of collaboration that has taken place with local partners to produce this plan. I was very pleased to receive the document and see for myself your 30-year vision for the region.

I am impressed that the plan looks to support government priorities, such as decarbonisation of the transport sector, improving road safety, facilitating economic growth and levelling up left behind communities in the south-east. I also welcome Transport for the South East's desire to continue exploring opportunities for different funding sources.

The plan provides a clear list of the region's transport priorities over the next 30 years. I have asked my officials to give the plan due consideration whilst giving Ministers advice on future policy and investment decisions. I encourage you to continue discussing the plan and its progress regularly with my officials.

I look forward to meeting with you soon to discuss the plan and the wider work of Transport for the South East.

Best wishes,

RICHARD HOLDEN MP

MINISTER FOR ROADS AND LOCAL TRANSPORT