

Report to: **Partnership Board - Transport for the South East**

Date of meeting: **22 July 2021**

By: **Lead Officer, Transport for the South East**

Title of report: **Technical Programme Progress Update**

Purpose of report: **To provide a progress update on the freight, logistics and gateways strategy and the roll out of TfSE's ProjectView data mapping tool.**

---

**RECOMMENDATIONS:**

**The members of the Partnership Board are recommended to:**

- (1) Note progress on the development of the freight, logistics and gateways strategy; and**
  - (2) note the progress with the rollout of ProjectView to constituent authorities and other key partners.**
- 

**1. Introduction**

1.1 The purpose of this report is to provide an update on two elements of the technical work programme. These are a progress update on the development of the freight, logistics and gateways strategy and an update on TfSE's ProjectView data mapping tool that has now been rolled out to constituent authorities and other key partners across the TfSE area.

**2. Freight, logistics and gateways strategy**

2.1 At its last meeting on 28 January 2021, the Partnership Board received an update on procuring a supplier to develop a freight, logistics and gateways strategy. The work was won by consultants WSP in partnership with Steer and Future City Logistics and comprises six work packages:

- Work Package 1: Stakeholder engagement
- Work Package 2: Freight data
- Work Package 3: Infrastructure
- Work Package 4: Technology and decarbonisation
- Work Package 5: Operational and planning considerations
- Work Package 6: Action plan and freight strategy development

2.2 A Freight Strategy Steering Group has been set up to oversee the development of the strategy and a Freight Forum provides a further opportunity for liaison and engagement with a wider group of stakeholders. Both allow a variety of private sector freight industry organisations to be involved in the development of the strategy. This is particularly important, given the public sector's relatively limited role in freight planning and operations. The Steering Group has met five times and two of the three planned Forum meetings have now been held. A potential continuing role for the Freight Forum after the study work finishes was favourably received at its meeting in June 2021. Forum members see positive advantages in continued engagement across the sector in the South East through TfSE.

2.3 Work packages (WP2 – WP5) should provide technical reports by the end of July 2021. Findings in those reports will form the basis of a freight strategy document and a supporting freight action plan, which should both be complete by the end of September 2021. The Freight Strategy and Action Plan will be presented to the October meeting of the Partnership Board for agreement.

### **3 ProjectView**

3.1 As part of the TfSE transport strategy commission, WSP consultants developed a web based data viewing tool. This was an 'added value' element offered by WSP as part of their joint tender for the transport strategy with Steer consultants. The purpose of the ProjectView tool is to provide a consistent and common platform for the evidence collected from across the TfSE area as part of the development of the transport strategy. The tool presents these datasets in an easy to view mapping format. In addition to support from TfSE, key local transport authority officers have also been involved in the development of the tool by offering valuable feedback when required.

3.2 The development of ProjectView was completed in August 2020. The tool was then launched to constituent authorities and district and borough authorities at the TfSE conference in October 2020. Attendees at the conference were informed that ProjectView will be rolled out to key stakeholders at the start of 2021.

3.3 Appendix 1 presents three screenshots showing examples of the mapping of different TfSE datasets included within the ProjectView tool. ProjectView currently holds over 290 datasets which were collated as part of the TfSE transport strategy development. Appendix 2 presents a list of the datasets that are currently available within ProjectView.

3.4 TfSE has organised and facilitated a series of ProjectView training workshops for representatives from the local transport authorities and district and borough authorities. A well attended training session for local transport authority officers took place in April 2021. Two training sessions for district and borough authorities also took place in May 2021. Following these training workshops, a large number of attendees shared very positive feedback about how ProjectView will be of benefit to them.

3.5 Going forward, TfSE are working towards a refresh of the datasets that are currently available within ProjectView. New datasets will be added using the data that informs the current TfSE technical workstreams including the ongoing area studies work, the future mobility strategy and the freight, logistics and gateways strategy. In addition to this new data, TfSE aim to approach district and borough authorities to collate and present local plan data from across the TfSE area in the tool. Discussions are also ongoing with WSP consultants about further development of the tool.

### **4 Financial considerations**

4.1 The budget for the freight logistics and gateways strategy is £125,000. This is being funded from the 2020/21 DfT grant funding of £1.225m. The Projectview data viewing tool was developed by WSP consultants as an 'added value' item to the transport strategy developed in 2019/20. The ongoing annual licensing costs of £12,000 for the tool are being met from the 2020/21 and 2021/22 DfT grant settlements.

### **5 Conclusions and recommendations**

5.1 The Partnership Board is recommended to note the progress being made on developing the freight, logistics and gateways strategy. The strategy and action plan are due to be completed in September 2021 and will be presented to the Partnership

Board in October 2021 for their agreement. ProjectView, TfSE's data viewing tool, has now been successfully rolled out to local transport authorities and district and borough authorities from across the TfSE area with an update to the data sets currently being planned. A further update on the technical work will be presented to the Partnership Board at the meeting in October 2021.

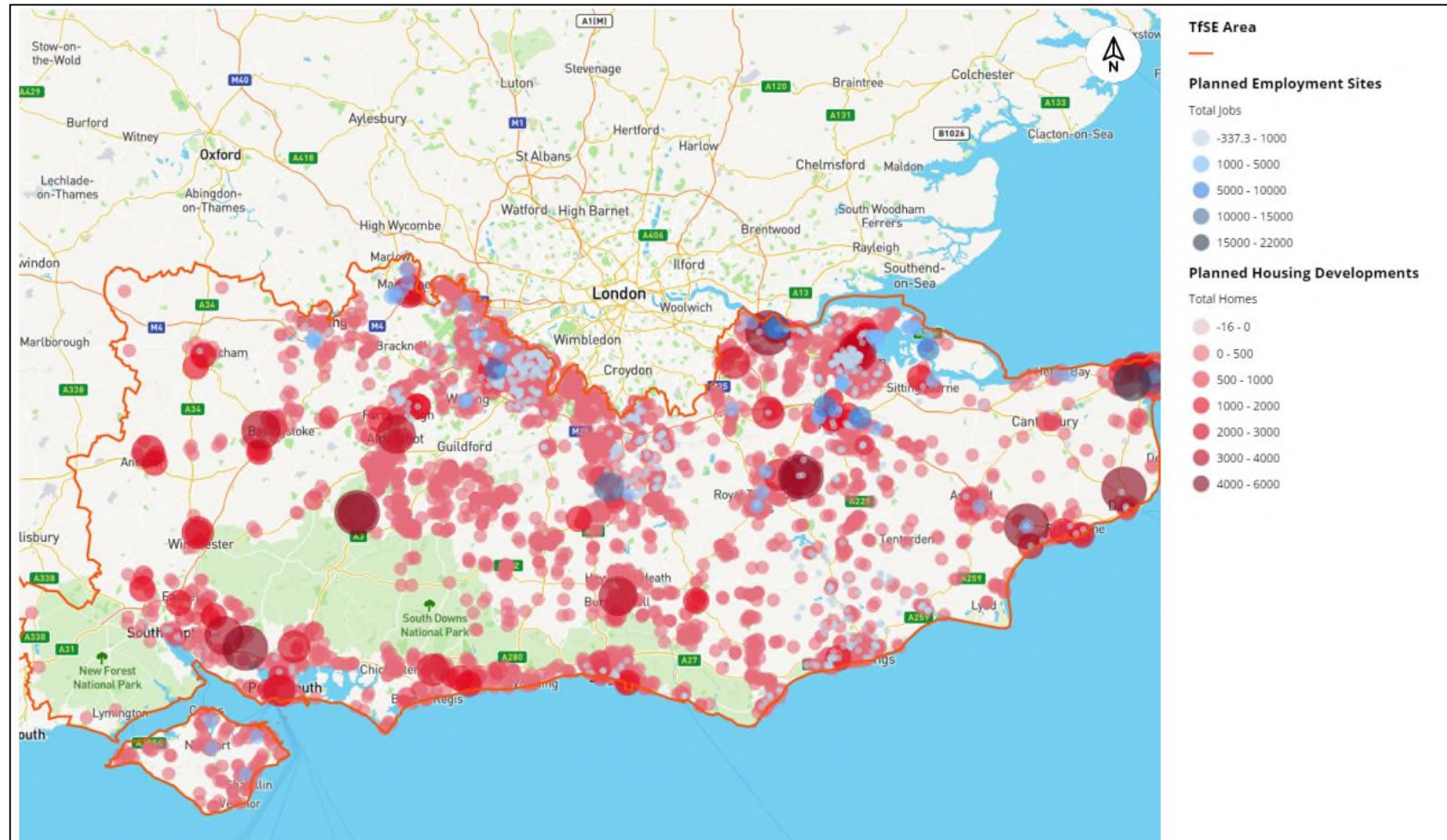
**RUPERT CLUBB**  
**Lead Officer**  
**Transport for the South East**

Contact Officer: Tiff Lynch  
Tel. No. 07541 612381  
Email: [tiffany.lynch@eastsussex.gov.uk](mailto:tiffany.lynch@eastsussex.gov.uk)

Contact Officer: Benn White  
Tel. No. 07714 847288  
Email: [benn.white@eastsussex.gov.uk](mailto:benn.white@eastsussex.gov.uk)

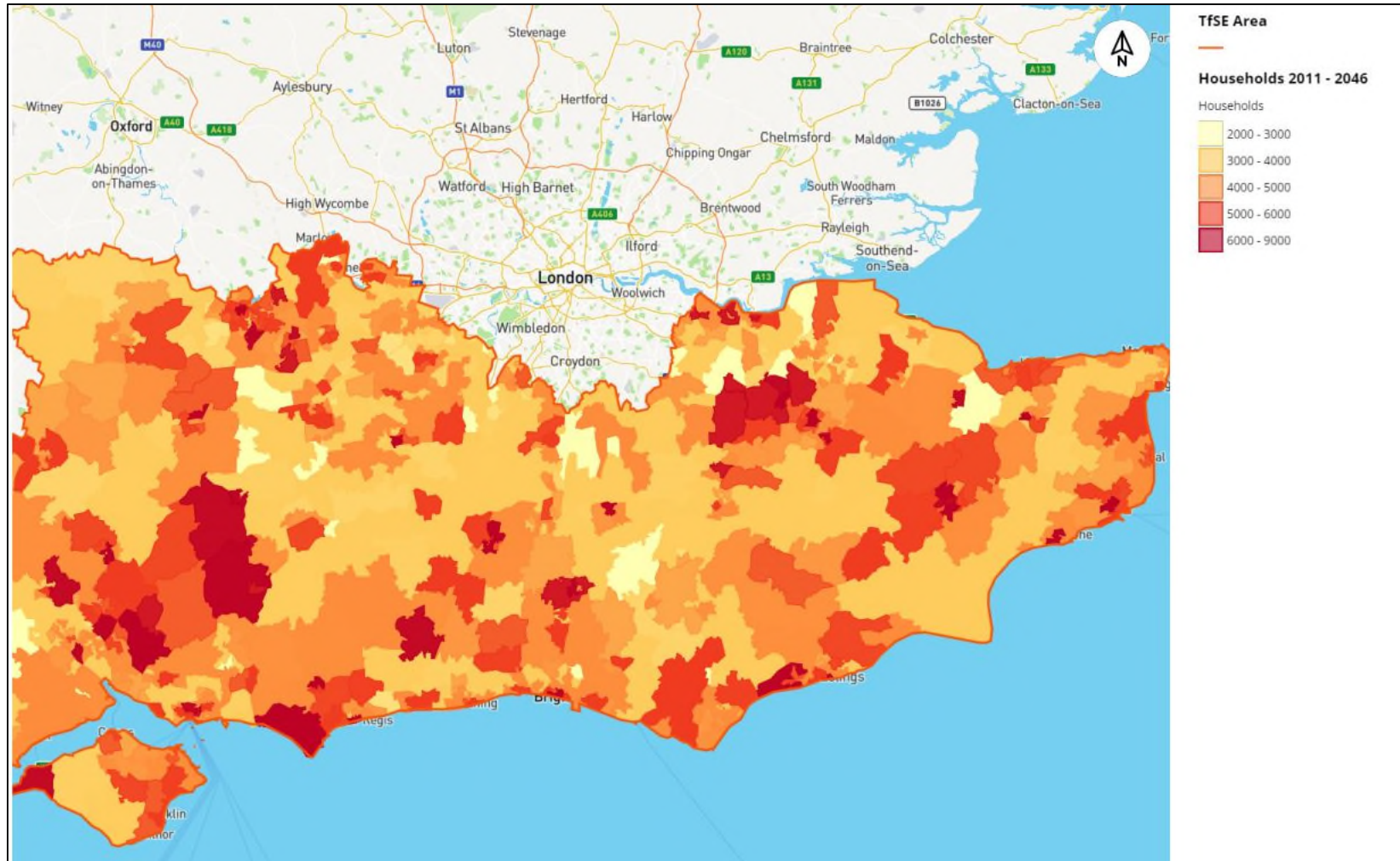
Examples of the mapping of different TfSE datasets included within the ProjectView tool

Fig 1. Presentation of local plan data which was collected in 2019 from District and Borough Authorities.



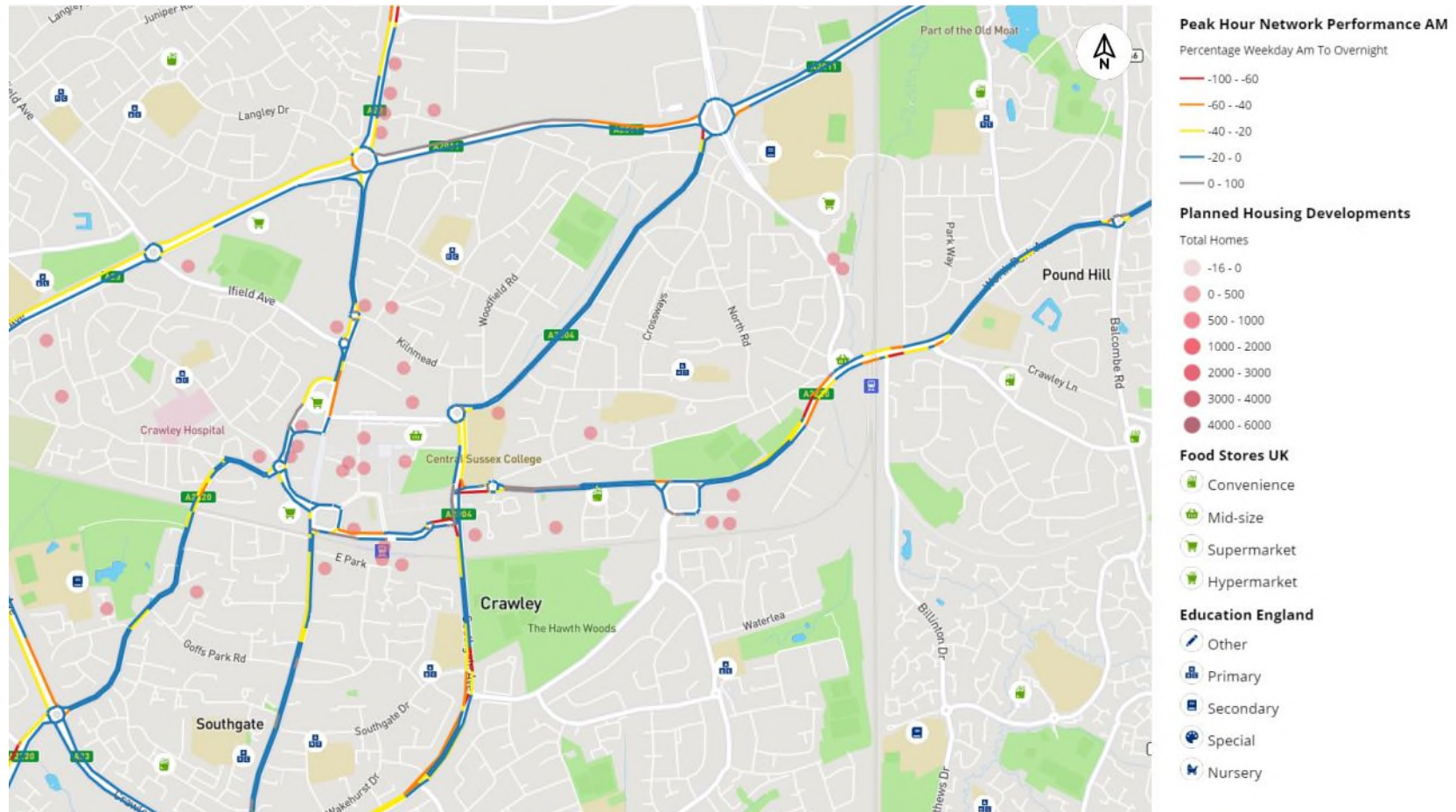
Agenda Item 11 – Technical Programme Update – Appendix 1

Fig 2. Presentation of the forecast number of households from 2011 - 2046.



# Agenda Item 11 – Technical Programme Update – Appendix 1

Fig 3. Presentation of the Trafficmaster dataset, allowing an accurate view of the speed of traffic on roads.



Agenda Item 11 – Technical Programme Update – Appendix 2

TfSE owned data which was collected as part of the TfSE transport strategy development.

Data Group	Data Name
Boundaries	Counties
Boundaries	Counties Unitary and District
Boundaries	LEP Boundaries
Boundaries	Local Authority Districts
Boundaries	TfSE Study Area
Development	Planned Employment Sites
Development	Planned Housing Developments
Development	Planned Mixed Used Sites
Development	Planned Unknown Use Sites
Development	Priority Sectors
Economy	Business Register and Employment Survey 2017
Economy	Economic Hubs
Economy	Enterprise Zone Sites
Economy	Major Companies
Economy	Research Institutions
Environment	Communities At Risk Of Flooding
Environment	Per Capita Emissions
Environmental Designations	Aqma
Environmental Designations	Greenbelt
Environmental Designations	Groundwater Source Protection Zones
Environmental Designations	Marine Conservation Zones
Environmental Designations	Noise Sensitive Areas
Environmental Designations	Potential Special Protection Area
Freight Logistics	All Commodities by Freight
Freight Logistics	Construction by Freight
Freight Logistics	Freight Railway Stations
Freight Logistics	Freight Terminals Locations
Freight Logistics	Intermodal by Freight
Freight Logistics	Nuts Od Goods Lifted Ukj1 Tonnage
Freight Logistics	Nuts Od Goods Lifted Ukj2 Tonnage
Freight Logistics	Nuts Od Goods Lifted Ukj3 Tonnage
Freight Logistics	Nuts Od Goods Lifted Ukj4 Tonnage
Freight Logistics	Terminal Commodity Type
Freight Logistics	Warehouse Locations
Future Mobility	Broadband Availability
Future Mobility	Electric Charge Points
Future Mobility	Plugin Car Van Registrations 2012 - 2018
Future Mobility	Proportion Electric Consumption From Renewable Energy Eng 2016
Healthy Lifestyles	Cycling Frequency
Healthy Lifestyles	Excess Weight
Healthy Lifestyles	Mothers Over 30 or 35

Agenda Item 11 – Technical Programme Update – Appendix 2

Healthy Lifestyles	Physically Active
Healthy Lifestyles	Proportion of Adults Who Walk or Cycle
International Gateways	Airports with Passenger Od Information
International Gateways	Channel Tunnel
International Gateways	Eurostar
International Gateways	Ports
International Gateways	Tonnage by Key Ports
Local Facilities	Hospitals
Local Facilities	Universities
Population	Household Increase 2011 2041
Population	International Migration 2019 204
Population	Net Migration 2019 2041
Population	Percentage Pop Over 65 2016 2028
Population	Percentage Pop Over 85 2016 2028
Population	Population Growth 2019 2041
Social Economic	Distance Travelled Work 2011
Social Economic	Economically Active Pop Census 2011
Social Economic	Employment Growth 2011 2041
Social Economic	Gross Disposable Household Income 2016
Social Economic	GVA Per Capita 1998 2016
Social Economic	Highest Level Qualification 2011
Social Economic	Housing Affordability Ratio 97 2018
Social Economic	IMD 2015
Social Economic	Industry Economic Activity 2011
Social Economic	Method Travel to Work 2011
Social Economic	No Qualifications Percentage 2011
Social Economic	Travel to Work 2016 UK La
Social Economic	Workplace Pop Census 2011
Transport Infrastructure	Key Freight Links
Transport Infrastructure	Major Road Network
Transport Infrastructure	Orbital Links
Transport Infrastructure	Radial Links
Transport Infrastructure	Rail Station usage
Transport Infrastructure	Rail Connectivity
Transport Infrastructure	Strategic Road Network
Transport Infrastructure	Traffic Growth
Transport Models	Base 2015 AM
Transport Models	Base 2015 Ip
Transport Models	Base 2015 PM
Transport Models	Future 2041 Dm AM
Transport Models	Future 2041 Dm Ip
Transport Models	Future 2041 Dm PM
Transport Performance	City of London Journey Time
Transport Performance	Corridor Delay Monetary Impacts
Transport Performance	DfT Traffic Count AM
Transport Performance	DfT Traffic Count PM



Agenda Item 11 – Technical Programme Update – Appendix 2

Transport Performance	Drive Time From Brighton
Transport Performance	Drive Time From Canary Wharf
Transport Performance	Drive Time From City Of London
Transport Performance	Drive Time From Crawley
Transport Performance	Drive Time From Farnborough
Transport Performance	Drive Time From Heathrow
Transport Performance	Drive Time From Portsmouth
Transport Performance	Drive Time From Reading
Transport Performance	Drive Time From Southampton
Transport Performance	Drive Time From West End
Transport Performance	Journey To Work From London
Transport Performance	Journey To Work To London
Transport Performance	Killed Or Seriously Injured On Roads
Transport Performance	Locally Managed A Road Delay 2015
Transport Performance	Peak Hour Network Performance AM
Transport Performance	Peak Hour Network Performance PM
Transport Performance	Road Noise Defra
Transport Performance	Tempo
Transport Strategy	Major Road Network Corridors
Transport Strategy	Major Road Network Schemes
Transport Strategy	Schemes
Transport Strategy	Strategic Ferry Links
Transport Strategy	Strategic MRN Links
Transport Strategy	Strategic Other Roads Links
Transport Strategy	Strategic Rail Links
Transport Strategy	Strategic Schematic Links
Transport Strategy	Strategic SRN Links

Publicly available data which was collected as part of the TfSE transport strategy development.

Data Group	Data Name
Air Quality	Aqma October 2019
Air Quality	Benzene Annual Mean
Air Quality	Carbon Monoxide Max 8Hr Mean
Air Quality	No2 Annual Mean
Air Quality	Nox Annual Mean
Air Quality	Ozone Days Greater 120Microgram M3
Air Quality	Pm10 Annual Mean
Air Quality	Pm25 Annual Mean
Air Quality	So2 Annual Mean
Aviation	Caa Aerodromes
Aviation	Caa Safeguarding
Aviation	Eskdalemuir Boundary
Aviation	Nats Radar Zones 020M
Aviation	Nats Radar Zones 040M

Agenda Item 11 – Technical Programme Update – Appendix 2

Aviation	Nats Radar Zones 060M
Aviation	Nats Radar Zones 080M
Aviation	Nats Radar Zones 100M
Aviation	Nats Radar Zones 120M
Aviation	Nats Radar Zones 140M
Aviation	Nats Radar Zones 160M
Aviation	Nats Radar Zones 180M
Aviation	Nats Radar Zones 200M
Aviation	Onshore Radar Coverage 20m
Aviation	Onshore Radar Coverage 40m
Aviation	Onshore Radar Coverage 60m
Aviation	Onshore Radar Coverage 80m
Aviation	Onshore Radar Coverage 100m
Aviation	Onshore Radar Coverage 120m
Aviation	Onshore Radar Coverage 140m
Aviation	Onshore Radar Coverage 160m
Aviation	Onshore Radar Coverage 180m
Aviation	Onshore Radar Coverage 200m
Boundaries	Ceremonial Counties
Boundaries	County Unitary Metro
Boundaries	Msoa 2011
Boundaries	Output Area 2011
Boundaries	Postcode Area Boundary
Boundaries	Postcode District Centroid
Boundaries	Postcode District Boundary
Boundaries	Postcode District Centroid
Boundaries	Postcode Sector Boundary
Boundaries	Postcode Sector Centroid
Boundaries	Wards 2011
Boundaries	Workplace Zones 2011
Canal and River Trust	Aqueducts
Canal and River Trust	Bridges
Canal and River Trust	Canal Centreline
Canal and River Trust	Docks
Canal and River Trust	Embankments
Canal and River Trust	Lakes Ponds Fisheries
Canal and River Trust	Locks
Canal and River Trust	Outfall Discharge Points
Canal and River Trust	Reservoirs
Census 2011	Age Composition
Census 2011	Car Ownership
Coastal Design Sea Levels	Coastal Flood Boundary Confidence Intervals
Coastal Design Sea Levels	Coastal Flood Boundary Estuary Boundaries
Coastal Design Sea Levels	Coastal Flood Boundary Extreme Sea Levels
Coastal Design Sea Levels	Coastal Flood Boundary Gauge Data
Coastal Design Sea Levels	Coastal Flood Boundary Surge Shapes

Agenda Item 11 – Technical Programme Update – Appendix 2

Cultural Heritage	Battlefield
Cultural Heritage	Battlefields Inventory Boundary
Cultural Heritage	Conservation Areas Scotland
Cultural Heritage	Gardens and Designed Landscapes Scotland
Cultural Heritage	Heritage Coast England
Cultural Heritage	Heritage Coast Wales
Cultural Heritage	Listed Building Point
Cultural Heritage	Listed Building Poly
Cultural Heritage	Listed Building Scotland
Cultural Heritage	Park and Garden
Cultural Heritage	Properties in Care Scotland
Cultural Heritage	Scheduled Monument
Cultural Heritage	Scheduled Monument Points Scotland
Cultural Heritage	Scheduled Monument Scotland
Cultural Heritage	World Heritage Site
Cultural Heritage	World Heritage Site Scotland
Flood Maps	Areas Benefiting from Flood Defences
Flood Maps	Flood Alert Areas
Flood Maps	Flood Risk Areas
Flood Maps	Flood Storage Areas
Flood Maps	Flood Warning Areas
Flood Maps	Flood Zone 2
Flood Maps	flood_zone_3
Flood Maps	Historic Flood Map
Flood Maps	Recorded Flood Outlines
Flood Maps	Spatial Flood Defences
Flood Maps	Statutory Main Rivers 10K
Geology Hydro Mining	Bgs Geology Map Index 50K
Geology Hydro Mining	Hydraulic Conductivity
Geology Hydro Mining	Porosity
Geology Hydro Mining	Specific Discharge
Geology Hydro Mining	Storage Coefficient
Geology Hydro Mining	Transmissivity
Habitats Species	Ancient Woodland Inventory
Habitats Species	Ancient Woodland Inventory Scotland
Habitats Species	Esa Schemes
Habitats Species	Great Crested Newt Sites Scotland
Habitats Species	Great Crested Newt Survey Locations Scotland
Habitats Species	Intermediate Bog Inventory Scotland
Habitats Species	Lowland Raised Bog Inventory Scotland
Habitats Species	Natural Areas
Habitats Species	Nature Improvement Areas
Habitats Species	Semi Natural Woodland Inventory Scotland
Habitats Species	Target Butterfly and Moths Scotland
Landscape Planning	AONB
Landscape Planning	AONB Wales

Agenda Item 11 – Technical Programme Update – Appendix 2

Landscape Planning	Character Areas
Landscape Planning	Core Paths Scotland
Landscape Planning	Landscape Character Assessment
Landscape Planning	National Scenic Areas
Landscape Planning	Proposed Onshore Windfarms Scotland
Landscape Planning	Wildland Scotland
Local Facilities	Education Eng Wal
Local Facilities	Education Sco
Local Facilities	Fire stations England
Local Facilities	Food Stores UK
Local Facilities	Football Stadiums
Local Facilities	Libraries in London
Local Facilities	NHS Facilities England
OS Open Zoomstack	Airports
OS Open Zoomstack	Boundaries
OS Open Zoomstack	Etl
OS Open Zoomstack	Foreshore
OS Open Zoomstack	Greenspace
OS Open Zoomstack	Land
OS Open Zoomstack	National Parl
OS Open Zoomstack	Rail
OS Open Zoomstack	Surfacewater
Protected Areas	Biogenetic Reserve Scotland
Protected Areas	Biogenetic Reserve Wales
Protected Areas	Biosphere Region
Protected Areas	Biosphere Reserves Scotland
Protected Areas	Biosphere Reserves Wales
Protected Areas	Cntryprk Eng
Protected Areas	Cntryprk Sco
Protected Areas	Cntryprk Wal
Protected Areas	Couneur Sco
Protected Areas	Greenbelt Eng
Protected Areas	Lnr
Protected Areas	Lnr Sco
Protected Areas	Lnr Wal
Protected Areas	Marine Consultation Area Scotland
Protected Areas	Mnr Wal
Protected Areas	Natpark
Protected Areas	Natpark Sco
Protected Areas	Natpark Wal
Protected Areas	nnr
Protected Areas	Nnr Sco
Protected Areas	Nnr Wal
Protected Areas	Ramsar
Protected Areas	Ramsar Sco
Protected Areas	Ramsar Wal

Agenda Item 11 – Technical Programme Update – Appendix 2

Protected Areas	Sac
Protected Areas	Sac Sco
Protected Areas	Sac Wal
Protected Areas	SPA
Protected Areas	SPA Sco
Protected Areas	SPA Wal
Protected Areas	SSSI Scot Heritage
Protected Areas	SSSI Sco
Protected Areas	SSSI Wal
Socio Economic	Imd England 2015
Socio Economic	Imd England 2019
Socio Economic	Imd Scotland 2016
Socio Economic	Imd Wales 2019
Socio Economic	Major Employment Areas
Transport	Accidents
Transport	Accidents Pivot
Transport	Bike Hire Stations London
Transport	Bus Stops London
Transport	Bus Stops National
Transport	Cycle Routes London
Transport	London Underground Network
Transport	London Underground Stations
Transport	Nat Trails
Transport	National Grid Towers
Transport	National Grid Transmission Lines
Transport	Railway Stations
Transport	Sustrans Localroute
Transport	Sustrans Nationalroute
Transport	Sustrans Ncnlink
Transport	Sustrans Ncnlink Polyline
Transport	Sustrans Regionalroute